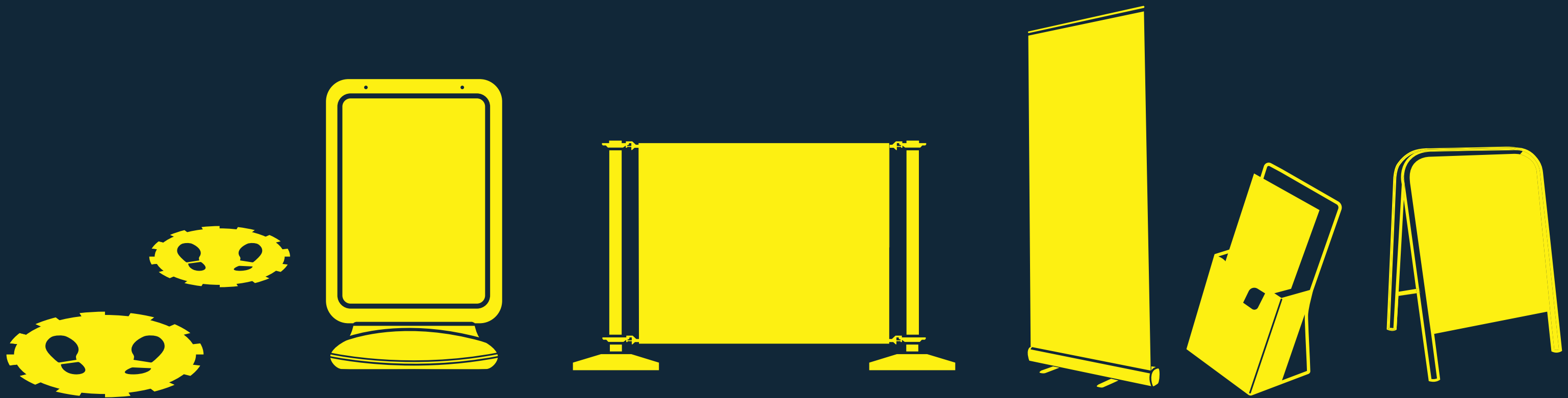


SOCIAL DISTANCING SIGNS & DISPLAY SOLUTIONS



Allow us to help you prepare for the 'new normal' with our full range of customised or 'off the shelf' graphic products, to help you stay safe and practice social distancing within your business environment and work place.

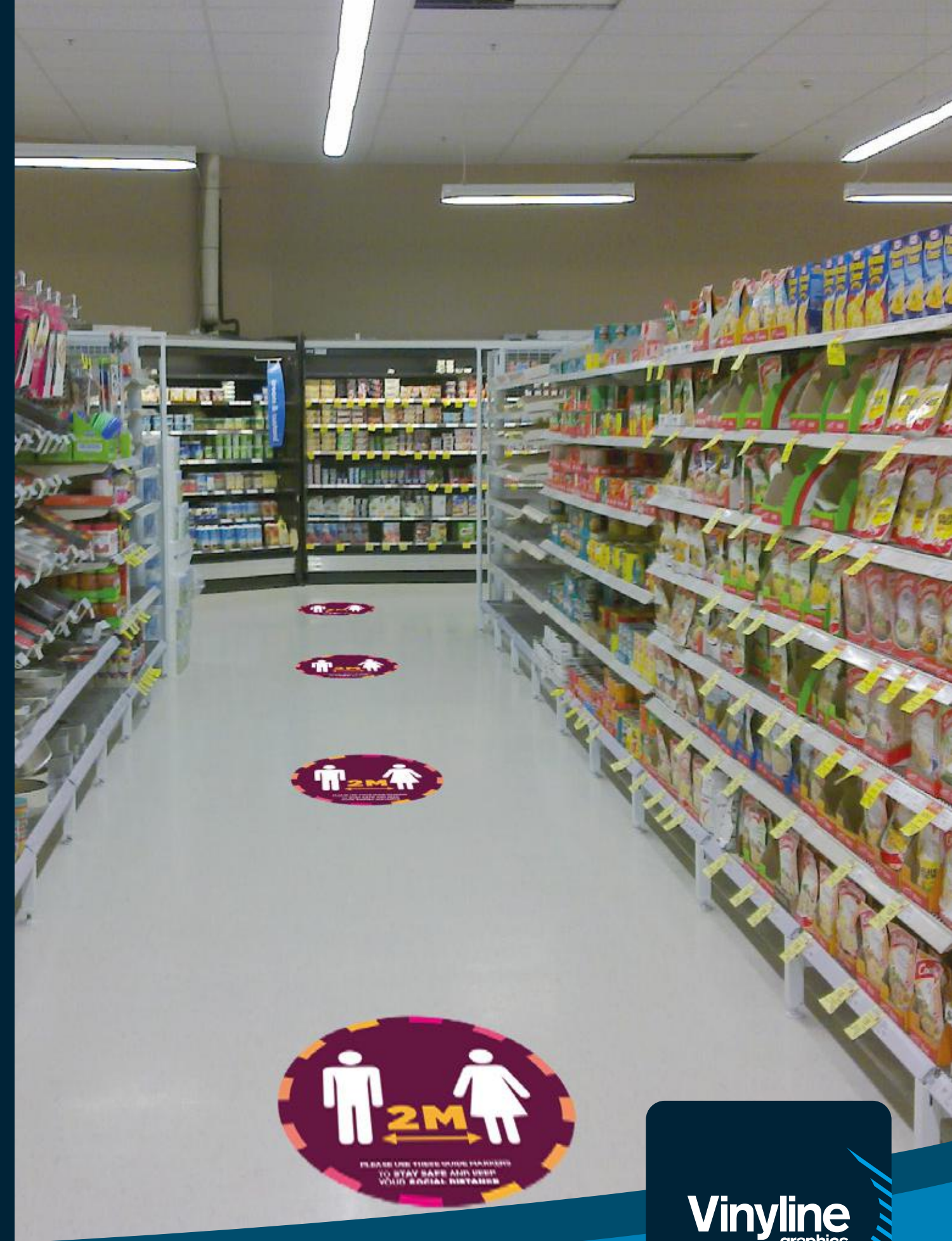


01744 756 644
sales@vinyline.co.uk

FLOOR GRAPHICS



CUSTOMISED VERSIONS AVAILABLE



01744 756 644
sales@vinyline.co.uk

PULL UP STANDS

HOW TO HAND WASH

Duration of the entire procedure: 40-60 seconds

- 1 Wet hands with water;
- 2 Apply enough soap to cover all hand surfaces;
- 3 Rub hands palm to palm;
- 4 Right palm over left dorsum with interlaced fingers and vice versa;
- 5 Palm to palm with fingers interlaced, with fingers interlocked;
- 6 Backs of fingers to opposing palms with fingers interlocked;
- 7 Rotational rubbing of left thumb clasped in right palm and vice versa;
- 8 Rotational rubbing, backwards and forwards with clasped fingers of right hand in left palm and vice versa;
- 9 Rinse hands with water;
- 10 Dry hands thoroughly with a single use towel;
- 11 Use towel to turn off faucet;
- 12 Your hands are now safe.

THANK YOU

HELP US PROTECT YOURSELVES

BY PRACTICING SAFE SOCIAL DISTANCING



PLEASE USE OUR GUIDE MARKERS TO MAINTAIN SOCIAL DISTANCING

THANK YOU

HOW TO HAND WASH

Duration of the entire procedure: 40-60 seconds

- 1 Wet hands with water;
- 2 Apply enough soap to cover all hand surfaces;
- 3 Rub hands palm to palm;
- 4 Right palm over left dorsum with interlaced fingers and vice versa;
- 5 Palm to palm with fingers interlaced, with fingers interlocked;
- 6 Backs of fingers to opposing palms with fingers interlocked;
- 7 Rotational rubbing of left thumb clasped in right palm and vice versa;
- 8 Rotational rubbing, backwards and forwards with clasped fingers of right hand in left palm and vice versa;
- 9 Rinse hands with water;
- 10 Dry hands thoroughly with a single use towel;
- 11 Use towel to turn off faucet;
- 12 Your hands are now safe.

HELP US PROTECT YOURSELVES

BY PRACTICING SAFE SOCIAL DISTANCING



PLEASE USE OUR GUIDE MARKERS TO MAINTAIN SOCIAL DISTANCING

THANK YOU

HOW TO HAND WASH

Duration of the entire procedure: 40-60 seconds

- 1 Wet hands with water;
- 2 Apply enough soap to cover all hand surfaces;
- 3 Rub hands palm to palm;
- 4 Right palm over left dorsum with interlaced fingers and vice versa;
- 5 Palm to palm with fingers interlaced, with fingers interlocked;
- 6 Backs of fingers to opposing palms with fingers interlocked;
- 7 Rotational rubbing of left thumb clasped in right palm and vice versa;
- 8 Rotational rubbing, backwards and forwards with clasped fingers of right hand in left palm and vice versa;
- 9 Rinse hands with water;
- 10 Dry hands thoroughly with a single use towel;
- 11 Use towel to turn off faucet;
- 12 Your hands are now safe.

THANK YOU

HELP US PROTECT YOURSELVES

BY PRACTICING SAFE SOCIAL DISTANCING



PLEASE USE OUR GUIDE MARKERS TO MAINTAIN SOCIAL DISTANCING

THANK YOU

HOW TO HAND WASH

Duration of the entire procedure: 40-60 seconds

- 1 Wet hands with water;
- 2 Apply enough soap to cover all hand surfaces;
- 3 Rub hands palm to palm;
- 4 Right palm over left dorsum with interlaced fingers and vice versa;
- 5 Palm to palm with fingers interlaced, with fingers interlocked;
- 6 Backs of fingers to opposing palms with fingers interlocked;
- 7 Rotational rubbing of left thumb clasped in right palm and vice versa;
- 8 Rotational rubbing, backwards and forwards with clasped fingers of right hand in left palm and vice versa;
- 9 Rinse hands with water;
- 10 Dry hands thoroughly with a single use towel;
- 11 Use towel to turn off faucet;
- 12 Your hands are now safe.

THANK YOU

HELP US PROTECT YOURSELVES

BY PRACTICING SAFE SOCIAL DISTANCING



PLEASE USE OUR GUIDE MARKERS TO MAINTAIN SOCIAL DISTANCING

THANK YOU

CUSTOMISED VERSIONS AVAILABLE

01744 756 644
sales@vynline.co.uk

Vynline
graphics

Copyright © 2020 Vynline Ltd.

BANNERS & BARRIER STANDS



CUSTOMISED VERSIONS AVAILABLE



Vinyline
graphics

Copyright © 2020 Vinyline Ltd.

01744 756 644
sales@vinyline.co.uk

PAVEMENT SIGNS & A BOARDS

HOW TO HAND WASH

Duration of the entire procedure: 40-60 seconds

- 1 Wet hands with water.
- 2 Apply enough soap to cover all hand surfaces.
- 3 Rub hands palm to palm.
- 4 Right palm over left forearm with interlaced fingers and vice versa.
- 5 Palm to palm with fingers interlaced.
- 6 Backs of fingers to opposing palms with fingers interlocked.
- 7 Rotational rubbing of all thumbs clasped in right palm and vice versa.
- 8 Rotational rubbing, backwards and forwards with clasped fingers of right hand in left palm and vice versa.
- 9 Rinse hands with water.
- 10 Dry hands thoroughly with a single use towel.
- 11 Use towel to turn off faucet.
- 12 Your hands are now safe.

THANK YOU

HELP US PROTECT YOURSELVES

BY PRACTICING SAFE SOCIAL DISTANCING

PLEASE USE OUR GUIDE MARKERS TO MAINTAIN SOCIAL DISTANCING

THANK YOU

HOW TO HAND WASH

Duration of the entire procedure: 40-60 seconds

- 1 Wet hands with water.
- 2 Apply enough soap to cover all hand surfaces.
- 3 Rub hands palm to palm.
- 4 Right palm over left forearm with interlaced fingers and vice versa.
- 5 Palm to palm with fingers interlaced.
- 6 Backs of fingers to opposing palms with fingers interlocked.
- 7 Rotational rubbing of all thumbs clasped in right palm and vice versa.
- 8 Rotational rubbing, backwards and forwards with clasped fingers of right hand in left palm and vice versa.
- 9 Rinse hands with water.
- 10 Dry hands thoroughly with a single use towel.
- 11 Use towel to turn off faucet.
- 12 Your hands are now safe.

THANK YOU

HELP US PROTECT YOURSELVES

BY PRACTICING SAFE SOCIAL DISTANCING

PLEASE USE OUR GUIDE MARKERS TO MAINTAIN SOCIAL DISTANCING

THANK YOU

HOW TO HAND WASH

Duration of the entire procedure: 40-60 seconds

- 1 Wet hands with water.
- 2 Apply enough soap to cover all hand surfaces.
- 3 Rub hands palm to palm.
- 4 Right palm over left forearm with interlaced fingers and vice versa.
- 5 Palm to palm with fingers interlaced.
- 6 Backs of fingers to opposing palms with fingers interlocked.
- 7 Rotational rubbing of all thumbs clasped in right palm and vice versa.
- 8 Rotational rubbing, backwards and forwards with clasped fingers of right hand in left palm and vice versa.
- 9 Rinse hands with water.
- 10 Dry hands thoroughly with a single use towel.
- 11 Use towel to turn off faucet.
- 12 Your hands are now safe.

THANK YOU

HELP US PROTECT YOURSELVES

BY PRACTICING SAFE SOCIAL DISTANCING

PLEASE USE OUR GUIDE MARKERS TO MAINTAIN SOCIAL DISTANCING

THANK YOU

CUSTOMISED VERSIONS AVAILABLE



01744 756 644
sales@vynline.co.uk

Vynline
graphics

INFO WALL PANELS

HOW TO HAND WASH

Duration of the entire procedure: 40-60 seconds

- 1 Wet hands with water.
- 2 Apply enough soap to cover all hand surfaces.
- 3 Rub hands palm to palm.
- 4 Right palm over left dorsum with interlaced fingers and vice versa.
- 5 Palm to palm with fingers interlaced.
- 6 Backs of fingers to opposing palms with fingers interlocked.
- 7 Rotational rubbing of all thumbs clasped in right palm and vice versa.
- 8 Rotational rubbing, backwards and forwards with clasped fingers of right hand in left palm and vice versa.
- 9 Rinse hands with water.
- 10 Dry hands thoroughly with a single use towel.
- 11 Use towel to turn off faucet.
- 12 Your hands are now safe.

THANK YOU

HELP US PROTECT YOURSELVES

BY PRACTICING SAFE SOCIAL DISTANCING

2M

PLEASE USE OUR GUIDE MARKERS TO MAINTAIN SOCIAL DISTANCING

THANK YOU

HOW TO HAND WASH

Duration of the entire procedure: 40-60 seconds

- 1
- 2
- 3
- 4
- 5
- 6
- 7
- 8
- 9
- 10
- 11
- 12

THANK YOU

HELP US PROTECT YOURSELVES

BY PRACTICING SAFE SOCIAL DISTANCING

2M

PLEASE USE OUR GUIDE MARKERS TO MAINTAIN SOCIAL DISTANCING

THANK YOU

HOW TO HAND WASH

Duration of the entire procedure: 40-60 seconds

- 1
- 2
- 3
- 4
- 5
- 6
- 7
- 8
- 9
- 10
- 11
- 12

THANK YOU

HELP US PROTECT YOURSELVES

BY PRACTICING SAFE SOCIAL DISTANCING

2M

PLEASE USE OUR GUIDE MARKERS TO MAINTAIN SOCIAL DISTANCING

THANK YOU

CUSTOMISED VERSIONS AVAILABLE

HELP US PROTECT YOURSELVES

BY PRACTICING SAFE SOCIAL DISTANCING

2M

PLEASE USE OUR GUIDE MARKERS TO MAINTAIN SOCIAL DISTANCING

THANK YOU

TABLE DISPLAYS

HOW TO HAND WASH


⌚ Duration of the entire procedure: 40-60 seconds

- 1 Wet hands with water.
- 2 Apply enough soap to cover all hand surfaces.
- 3 Rub hands palm to palm.
- 4 Right palm over left dorsum with interlocked fingers and vice versa.
- 5 Palm to palm with fingers interlocked.
- 6 Backs of fingers to opposing palms with fingers interlocked.
- 7 Rotational rubbing of all thumbs clasped in right palm and vice versa.
- 8 Rotational rubbing, backwards and forwards with clasped fingers of right hand in left palm and vice versa.
- 9 Rinse hands with water.
- 10 Dry hands thoroughly with a single use towel.
- 11 Use towel to turn off faucet.
- 12 Your hands are now safe.

THANK YOU

HELP US PROTECT YOURSELVES

WHERE POSSIBLE PLEASE USE CONTACTLESS PAYMENT METHODS



THANK YOU

HOW TO HAND WASH


⌚ Duration of the entire procedure: 40-60 seconds



THANK YOU

HELP US PROTECT YOURSELVES

WHERE POSSIBLE PLEASE USE CONTACTLESS PAYMENT METHODS



THANK YOU

HOW TO HAND WASH


⌚ Duration of the entire procedure: 40-60 seconds



THANK YOU

HELP US PROTECT YOURSELVES

WHERE POSSIBLE PLEASE USE CONTACTLESS PAYMENT METHODS



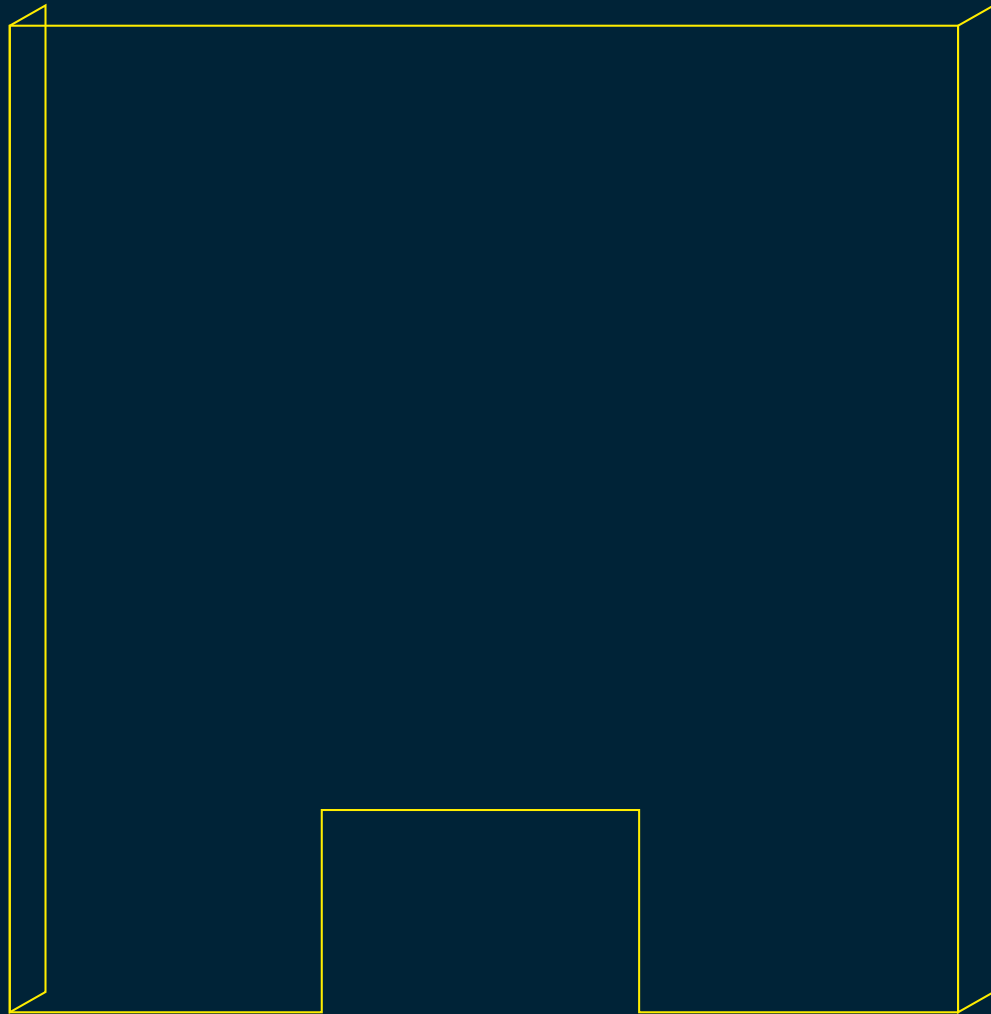
THANK YOU

CUSTOMISED VERSIONS AVAILABLE



01744 756 644
sales@vynline.co.uk

PROTECTIVE SCREENS



Vinyline
graphics

01744 756 644
sales@vinyline.co.uk